

## Nomad Flo SPC Stone Polymer Composite Flooring

### Installation Instructions

Read all instructions before installing. Incorrect installation will invalidate and void warranty.

#### IMPORTANT

- Product is intended for indoor use only.
- Product should not be used in areas with high risk of flooding (sauna, indoor swimming pool, shower zone, etc).
- Product is meant to be installed using a floating method only.
- Product includes an attached acoustic underlayment. In case you want to improve acoustic properties of your flooring, you can install an additional underlayment. It has to be recommended for vinyl flooring with maximum thickness of 1.6mm.
- Temperature before, during and after installation, during the use of flooring, should be kept between 18°C and 28°C with a humidity range of 35-65%.
- Always install your flooring in bright daylight to observe any imperfections. We will not be held responsible for any costs related to installation of the product with visible defects.

#### BEFORE INSTALLATION

- Product should be stored in boxes horizontally at all times.
- Room temperature and humidity of installation area should be consistent with normal, year-round conditions for at least one week before installation of flooring.
- Product is required to acclimate to the environment in which it will be used at least 48 hours prior to installation.

#### APPROPRIATE SUBSTRATE FOR INSTALLATION

- Product can be installed over a variety of subfloor surfaces such as concrete, plywood, OSB and other existing hard surfaces (wood, ceramic, resilient coverings).
- Ensure the surface is structurally sound, flat, dry and clean.
- Surface must be level to 3mm per 2m radius. Maximum deflection should be no more than 1mm.
- Surface must be free of debris, dust and other contaminants.
- Substrate must not hold excessive moisture. Moisture content is to be maximum 2.0% for cement substrate and 0.5% for anhydrite substrate (CM method).

#### RADIANT-HEATED SUBFLOOR

- Product can be installed over embedded radiant-heated system and electric heating mats as long as the subfloor temperature does not exceed 27°C. It is required to instal a temperature regulator and a temperature indicator.
- In case of embedded radiant-heated systems in all phases – construction of the system, drying and heating – instructions of the system supplier and respective norms have to be followed and confirmed in a written protocol.

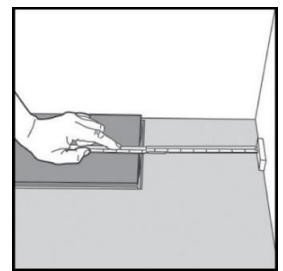
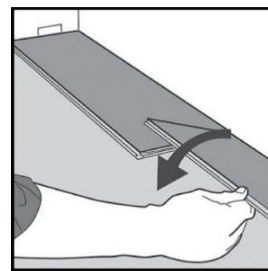
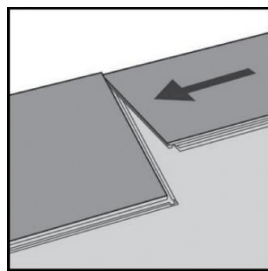
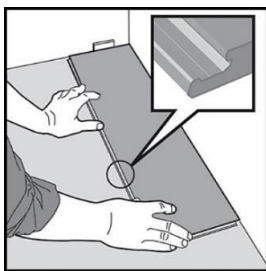
- For radiant-heated subfloor moisture content is to be maximum 1.5% (cement) and 0.3% (anhydrite).
- In case of underfloor heating, the width of expansion joints should be increased to 8 cm, if the floor area is to be greater than 50 m<sup>2</sup>.
- Temperature settings of the heating system during operation must ensure that the floor is not exposed to large temperature fluctuations.
- Space in which the product is to be installed must not contain both heated and unheated areas, unless there are adequate expansion joints to separate these areas.

#### STARTING INSTALLATION

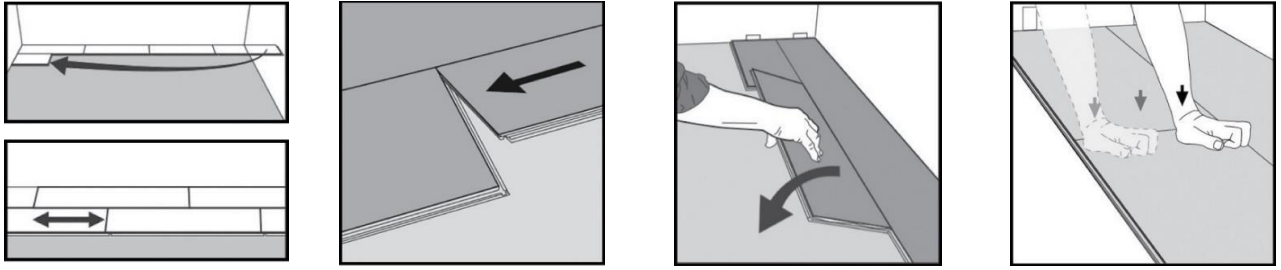
- Open several cartons at a time and use a mixture of planks from different cartons for best results and appearance.
- Make sure a 5mm space is left between planks and walls or other obstructions such as pipes, stairs, door frames, etc.
- Plan the layout carefully: the beginning and the end of rows are to be longer than 30cm, the final row is to be wider than 5cm (if necessary, adjust the first row width).
- Do not install the product over expansion joints.
- Do not install kitchen cabinets or island over the product.
- Do not install planks lengthwise and widthwise across distances that exceed 18 metres. If they exceed these limitations, separate the areas using a T-molding.

#### INSTALLATION

1. First plank, first row. Leave a 5mm gap to the left and position the plank tongue side against the wall.
2. Second plank, first row. Drop the plank gently to the narrow end of the first plank.
3. Make sure the planks are tight against each other. Gently press or tap at the narrow end just installed.
4. At the end of the first row, leave a 5mm gap to the wall, measure the length of the last plank and cut it off.



5. Second row. First plank should have a minimum length of 30cm. Click in place.
6. Minimum distance between narrow ends of planks in parallel rows should be at least 30cm.
7. Second plank, second row. Drop the plank gently to the narrow end of the first plank.
8. Click the plank to the narrow end of the previous plank. During the fold down make sure the planks are tight against each other.
9. Gently press or tap at the narrow end just installed.



10. Last row. Minimum width 5cm. Remember to leave a 5mm expansion gap. Cut the planks lengthwise, if necessary.

#### AFTER INSTALLATION

- Clean dust and debris regularly using a broom or vacuum with soft bristles.
- Clean any spills or liquids immediately.
- Mop as needed using a dampened mop and cleaner recommended for use on vinyl floor.
- Use protective devices under furniture, particularly items that are frequently moved. Any furniture with casters should not have ball casters. Only wide, non-staining rubber casters are to be used. Use protective mats underneath office chairs.
- Place a doormat at exterior doors to reduce dirt and debris tracked in onto floor.
- Protect the product from exposure to direct sunlight. During peak sunlight hours, the use of blinds or drapes is highly recommended.